

Cover Crops & Livestock



Pete Conkle-Columbiana SWCD/Wannabe Farmer

Email: pconkle@frontier.com

Office: 330-277-2974

Cell: 330-831-0006

It does
NOT
always go
as
planned!





Cover Crops => Baleage

- Scenario: Planting Sorghum Sudan after wheat harvest
- Typically planted between July 15-29th right into wheat stubble
- Seeded at 55 pounds per acre
- No herbicide burndown



2021 Sorghum Sudan Economics

- Planted 16 acres into wheat stubble July 14, 2021
 - Land rental (\$12.00/acre) \$192.00
 - Sorghum Sudan seed (55lbs/acre) \$603.84
 - No-till drill rental (Yes, I pay for it!) \$200.00
 - Fertilizer (Urea & ammonium Sulfate) \$1,433.76
 - Baling, wrapping, & hauling (134 bales) \$2,844.00
 - Total = \$5,273.60 / 134 bales = \$39.36 per bale

2021 Triticale Economics

- Planted 35 acres into soybean stubble October 9, 2020
 - Triticale seed (110lbs/acre) \$1,446.38
 - No-till drill rental \$350.00
 - 19-19-19 fertilizer (150lbs/acre) \$1,143.85
 - Liquid nitrogen & herbicide \$3,255.00
 - Raking, Baling, & tube line wrapping \$4,730.00
 - Bale Hauling (275 bales) \$390.00
 - Total \$11,315.23 / 275 bales = \$41.15 per bale

May 13, 2021



Drawbacks with baleage:

- It must be wrapped so that the feed can ferment.
- Different feeds have different time lengths



Cover Crops for Grazing







A little planning can save a lot of hay.

The possibilities are endless...





Cattle Manure Fertilizer is:

- In Units of nitrogen (N), Phosphorus (P), and Potassium(K):
- 84N – 54P – 189K per year or 0.23N-0.15P-0.52K per cow/day
- So, How long does it take to fertilize a pasture using AMP Grazing?
- 100 cows x's 1,000 lbs/hd x's 1 day grazing/1 acre = 23N-15P-52K/ac
- 3 Days Grazing/Acre = 69N-45P-156K/acre

Plan for a water source...



Fencing Options...

Technology keeps
improving

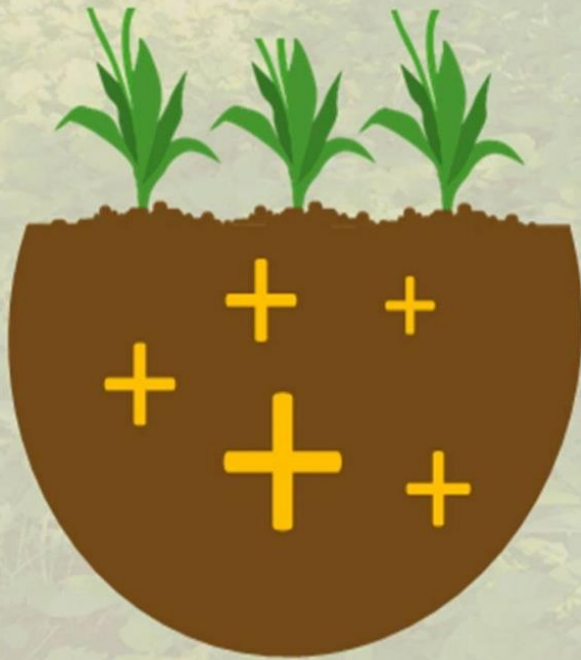
Supplies become
more economical





BENEFITS OF COVER CROPS

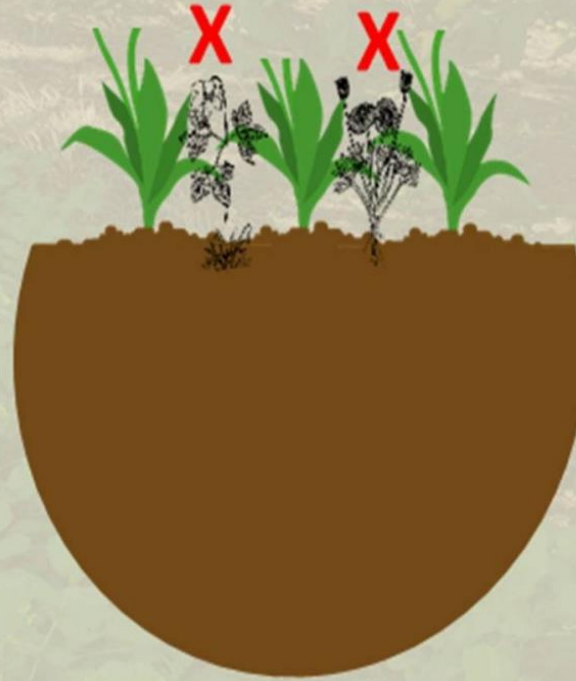
**Build
soil health & quality**



**Retain
soil from erosion**



**Suppress
weed growth**



**Improves
bio-diversity**





Wildlife Diversity

Planted July 20, 2020
into small hay field





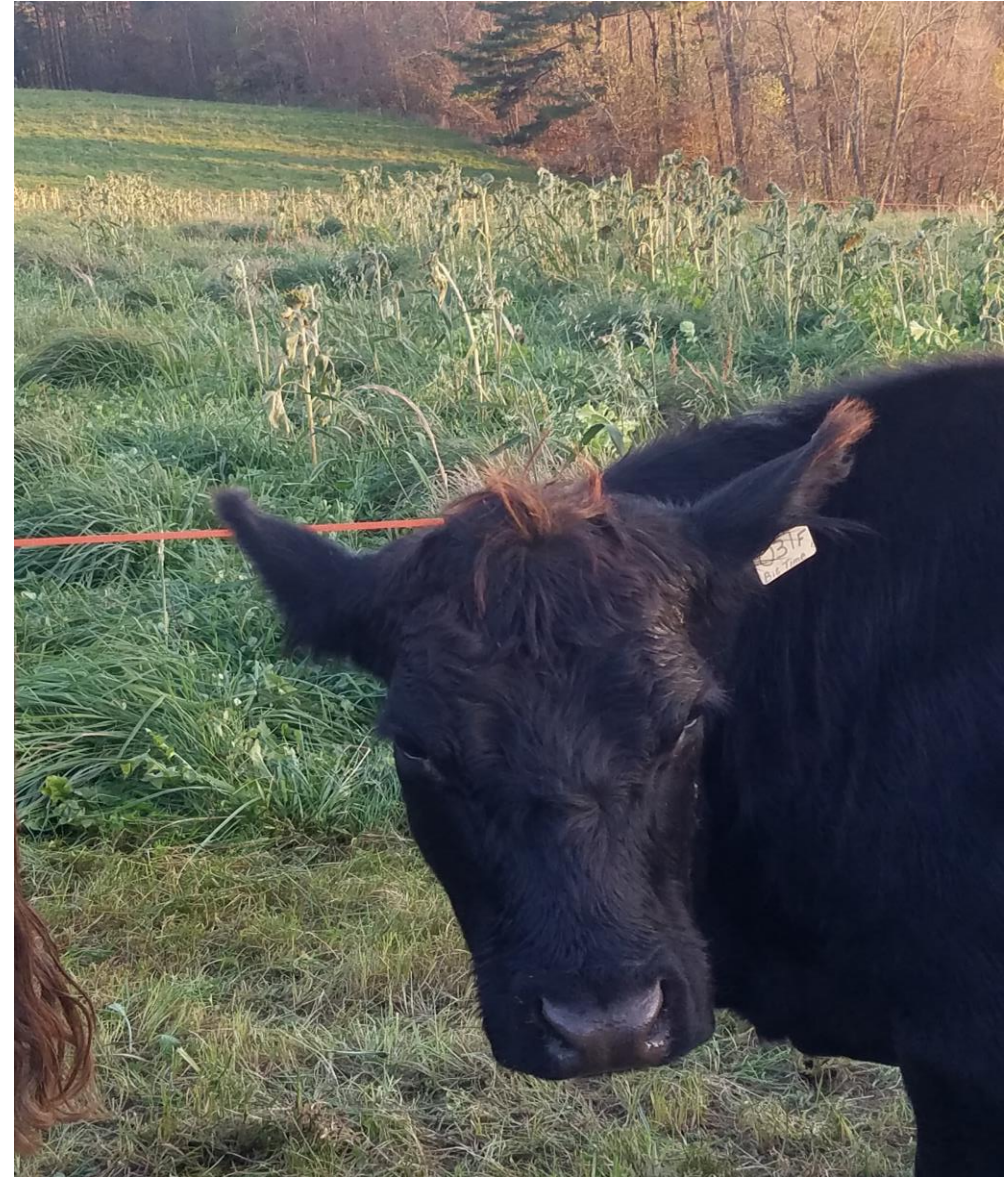


Cover Crop Blend
Sunflower
Oats
Radish
Buckwheat

October 2, 2020



November 2, 2020



December 2, 2020



